

# 2024 Wheat Yield Contest

## Awards & Practices

Sponsored by the University of Kentucky Cooperative Extension Service and Kentucky Small Grains Growers & Agribusinesses

Travelling Trophy Sponsors:



**KENTUCKY**  
*Small Grain*  
GROWERS' ASSOCIATION



2024 Kentucky Winners					
Name	County	Area	Division	Variety	Yield, bu/A
<b>No-Till Champion: Don Halcomb Travelling Trophy Sponsored by Siemer Milling Company</b>					
Tanner Stroup	Daviess	2	No-Tillage	AgriMaxx 513	123.14
<b>Tillage Wheat Champion: Kentucky Small Grain Growers Travelling Trophy</b>					
Cameron, Clay & Mark Wells	Union	2	Conventional	AgriMaxx 525	98.97
2024 Area Winners					
Name	County	Area	Division	Variety	Yield, bu/A
Hunt Farms	Christian	1	No-Tillage	Pioneer 25R499	113.14
Genesis Grain Farms	Union	2	No-Tillage	AgriMaxx 525	122.76
Alan Simmons	Logan	3	No-Tillage	AgriMaxx 513	107.12
100 Bushel Club					
Name	County	Area	Division	Variety	Yield, bu/A
Tanner Stroup	Daviess	2	No-Tillage	AgriMaxx 513	123.14
Genesis Grain Farms	Union	2	No-Tillage	AgriMaxx 525	122.76
Hunt Farms	Christian	1	No-Tillage	Pioneer 25R499	113.14
S & J Emmick	Hancock	2	No-Tillage	AgriMaxx 513	111.03
Alan Simmons	Logan	3	No-Tillage	AgriMaxx 513	107.12
Entrant					
Name	County	Area	Division	Variety	Yield, bu/A
Cameron, Clay & Mark Wells	Union	2	Conventional	AgriMaxx 525	98.97
Heckman Farms	Simpson	3	No-Tillage	Pioneer 25R50	98.31
Jonathan Hagan	Union	2	No-Tillage	Revere Reagan	89.77
Walnut Grove Farms	Simpson	3	No-Tillage	AgriMaxx 525	87.74

2024 Supervisor Awards			
Most Entries	No.	Top Three Average Yield	bu/A
Katie Hughes	3	Katie Hughes	103.83

Wheat Yield Contest Report summarized by Dr. Mohammad Shamim and Dr. Chad Lee, University of Kentucky.

## Winners Summaries

	Million seeds/A <sup>†</sup>	Seed, lb/A <sup>†</sup>	2023 Planting Date	2024 Harvest Date	Days	Row Width	Fall N, lb/A	Fall P2O5, lb/A	Fall K2O, lb/A	Wnt N, lb/A	Spr N, lb/A	Total N, lb/A <sup>‡</sup>
<b>Average</b>	1.9	150	10/17	6/18	245	7.5	39.8	100.5	121.3	59.3	71.6	158.8
<b>Minimum</b>	1.8	150	10/10	6/11	237	7.5	20.0	69.0	90.0	25.0	50.0	136.0
<b>Maximum</b>	2.0	150	10/26	6/29	250	7.5	100.0	200.0	200.0	130.0	100.0	230.0

## 100 Bushel Club Summary

	Million seeds/A	Seed, lb/A	Planting Date	Harvest Date	Days	Row Width	Fall N, lb/A	Fall P2O5, lb/A	Fall K2O, lb/A	Wnt N, lb/A	Spr N, lb/A	Total N, lb/A
<b>Average</b>	2.0	150.0	10/14/2023	6/16	243	7.5	43.8	104.6	121.6	68.0	65.0	163.8
<b>Minimum</b>	2.0	150.0	10/5/2023	6/11	237	7.5	20.0	69.0	90.0	50.0	50.0	136.0
<b>Maximum</b>	2.0	150.0	10/26/2023	6/22	250	7.5	100.0	200.0	200.0	130.0	75.0	230.0

## All Entries

<b>Varieties</b> <sup>α, β</sup>	AgriMaxx 513 (3) // AgriMaxx 525 (3) // Pioneer 25R44 // Pioneer 25R50 // Revere Reagan
<b>Other Fertilizers</b>	Sulfur (2) // Sulfur + Boron
<b>Manure</b>	None listed this year
<b>Growth Regulators</b>	Palisade or Palisade Max (8) // Pinzola
<b>Pest Management</b> <sup>γ</sup>	Warrior fb Miravis Ace // Agsaver Glyphosate+ Tigris MTZ + Anthem Flexx fb Treaty Extra + Lambda + Preemptor fb Sphaerex TM + Lambda + Bifenthrin + Pere Plus // Zidua + Metribuzin + Warrior fb Quadris fb Prosaro Pro + Lamcap fb Miravis Ace // Roundup + Anthem Flex fb Quelex fb Miravis Ace + Lamcap II // Anthem Flexx + Roundup fb Quelex, 2,4-D fb Miravis Ace, Warrior II // Harmony + Quelex fb Hero // Anthem Flexx + Metribuzin fb Lamcap II fb Miravis Ace // Roundup + Finesse fb Warrior fb Miravis Ace // F: Zidua + Roundup Powermax fb TopGuard + Quelex + 2,4-D fb Miravis Ace + Lamcap II

<sup>†</sup> Some farmers reported seed rate in million seeds per acre. Others reported pounds of seed per acre.

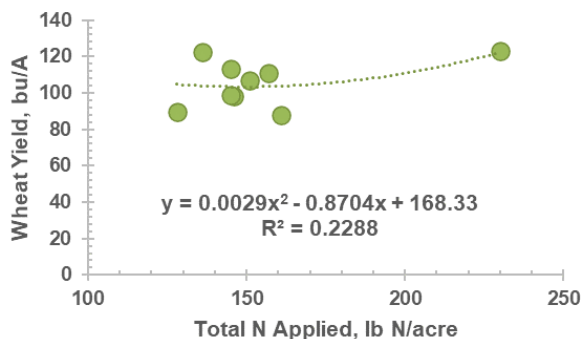
<sup>‡</sup> Total N includes nitrogen applied in the fall, in February, and in March.

<sup>α</sup> Number between parenthesis ( ) indicates no. of entries reporting that variety, fertilizer, growth regulator or pest management practice.

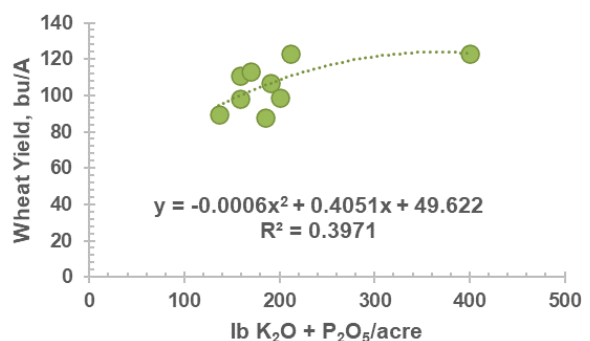
<sup>β</sup> Two forward slashes // separates entries.

<sup>γ</sup> The "+" means applied together. The "fb" means followed by.

2024 Wheat Yield Related to Total N Applied



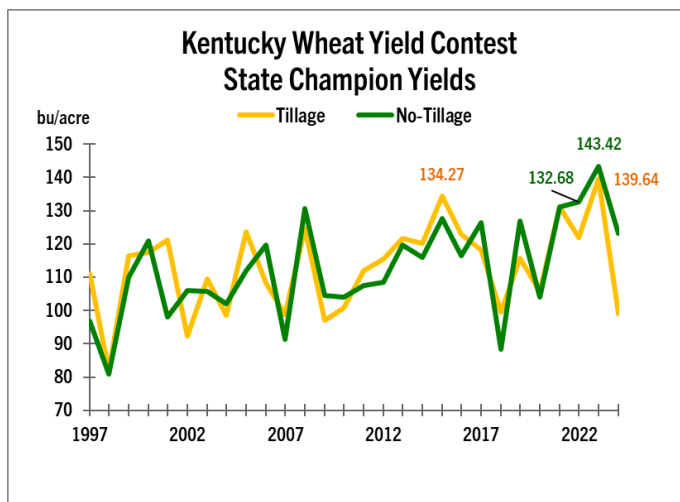
2024 Wheat Yield Related to P and K Applied



## History of Kentucky Wheat Winners, Highest Overall Yields

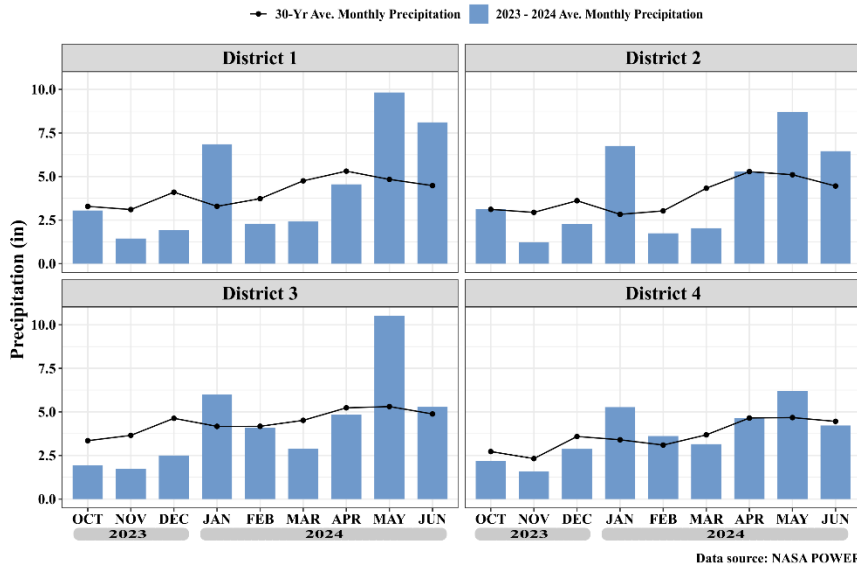
Year	Producer/Farm	County	Yield, Bu/A	Tillage Class*
1987	Johnny Dawson	Logan	89.1	
1988	Kamuf Brothers	Daviess	122.05	
1989	Johnny Dawson	Logan	104.32	
1990	J.C. Ellis, III	Daviess	100.5	
1991	Triple Oaks Farm	Warren	83.1	
1992	Larry Thompson	Logan	100.64	
1993	Miller Brothers	Todd	108.39	
1994	Don Halcomb	Logan	119.58	
1995	Jonathan Ayer	McLean	102.14	
1996	Whitlock Farms	Logan	99.81	
1997	James Robertson	Todd	110.89	tillage
1998	Cundiff Farms	Trigg	81.85	tillage
1999	Joe Neal Ballance	Warren	116.4	tillage
2000	David Hatton	Bath	120.94	no-tillage
2001	Keith Ayer	McLean	121.27	tillage
2002	Gene & William Boswell	Hancock	105.93	no-tillage
2003	Bruce Benson	Webster	109.53	tillage
2004	Burton Farms	Wayne	102.02	no-tillage
2005	Ronald and T.A. Stokes	Christian	123.71	tillage
2006	Pat Clements	Washington	108.36	no-tillage
2007	Sterett & Paul Miles	Hopkins	98.9	tillage
2008	Elkin Farms	Warren	130.61	no-tillage
2009	Peterson Farms	Nelson	104.53	no-tillage
2010	Peterson Farms	Nelson	104.19	no-tillage
2011	Double P Farms	Todd	112.07	tillage
2012	Clark Farms	Graves	115.41	tillage
2013	Jeff Coke	Daviess	121.80	tillage
2014	Jeff Coke	Daviess	120.26	tillage
2015	Keith Hendrickson	Union	134.27	tillage
2016	Kyle Bugg	Graves	123.01	tillage
2017	J. Stephen Emmick & Sons	Hancock	126.46	no-tillage
2018	S & J Emmick	Hancock	99.59	no-tillage
2019	Corn Silks Farms	Logan	126.88	no-tillage
2020	Hendrickson Farms	Union	105.73	tillage
2021	Glenn Thompson	Daviess	131.89	tillage
2022	S & J Emmick	Hancock	132.68	no-tillage
2023	Jason Crisp	McLean	143.42	no-tillage
2024	Tanner Stroup	Daviess	123.14	no-tillage

\* Tillage and No-Tillage classes began in 1997.



State Champion No-Till Yields are in green and the State Champion Tillage Yields are in yellow. Over time the yield differences has been minimal between these two practices with the 2024 season resulting in some of the greatest differences.

### Average Precipitation Across KY Districts



Precipitation (blue bars) for each month was above average in January and May across all four districts of the Wheat Yield Contest. Temperatures (red bars) for each month were near average through the wheat growing season. The higher precipitation in May often leads to more Fusarium Head Blight.

### Average Monthly Temperature Across KY Districts

